

Plotted 18 Mar 2007 from Ordnance Survey digitally derived data.

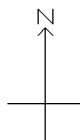
Produced using significant survey information from Ordnance Survey large scales digital data, and incorporated into OS Landplan Sep 2000.

© Crown copyright 2007.

Reproduction in whole or in part is prohibited without the prior written permission of Ordnance Survey.

Administrative boundaries revised to Jun 2000.

Additional boundaries information:



This OS Landplan plot is enlarged from derived mapping produced at 1:10000 scale

Contours are at 10 metre intervals.

Heights are given in metres above Newlyn Datum. The representation of a road, track or path is no evidence of a right of way.

The alignment of tunnels is approximate.

An OS Landplan symbols leaflet is available on request from Ordnance Survey Mapping and Data Centres.

Ordnance Survey, the OS Symbol and OS Landplan are registered trade marks of Ordnance Survey, the national mapping agency of Great Britain.

Plot centre coordinates: 212570 756677

Supplied by: The Glasgow Map Centre

Plot serial number: 00133900

Scale 1:5000